

# Coppice Gate







A superb four bedroom family home that has been thoughtfully extended to provide a large open plan living area with extended kitchen and four bedrooms, three of which are doubles.

Benefiting from a corner plot this property has been extended out to its side from front to rear. The ground floor layout offers a flexible arrangement with space for both a large living space and dining area. The highly-spec'd kitchen has also been enlarged during the modifications and is recently fitted and modern, offering Corian worktops with an integrated sink and drainer, washing machine, dish washer, tumble dryer, Bosch double oven and a large 5 burner gas hob with stylish Electrolux extractor above. Underfloor heating finishes this room of perfectly. The rear opens to an immaculate south facing garden that is fenced in and landscaped with artificial turf and a patio area for relaxing.





On the first floor the master bedroom has been extended and benefits from an en-suite shower room. The three additional bedrooms are made up of two doubles and one single, all served by a modern family bathroom.

Ample off road parking is to be found at the front of the property, enough for three vehicles. The property benefits with double glazed windows and doors and gas central heating.

Situation: located just 2 miles from the town centre and a short walk to Gallagher and Kingsditch Retail parks. The M5 motorway travelling north is just minutes by car and there are excellent bus routes on your doorstep.

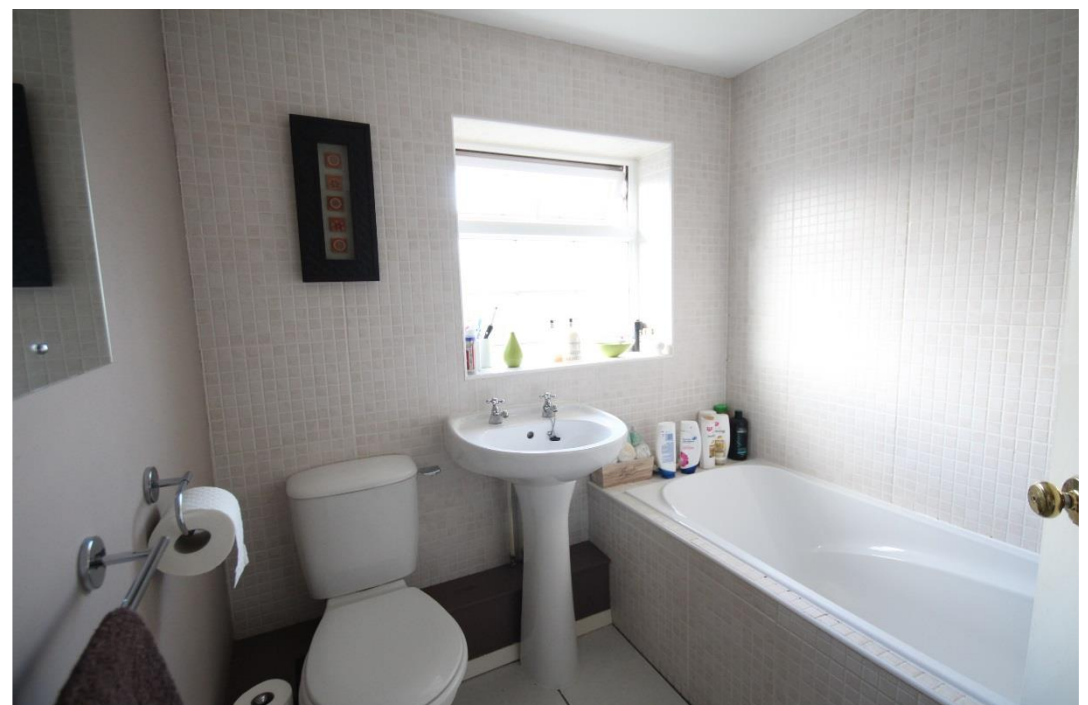
This property is offered for sale with no onward chain. Please contact Mark Ellison to arrange a visit.

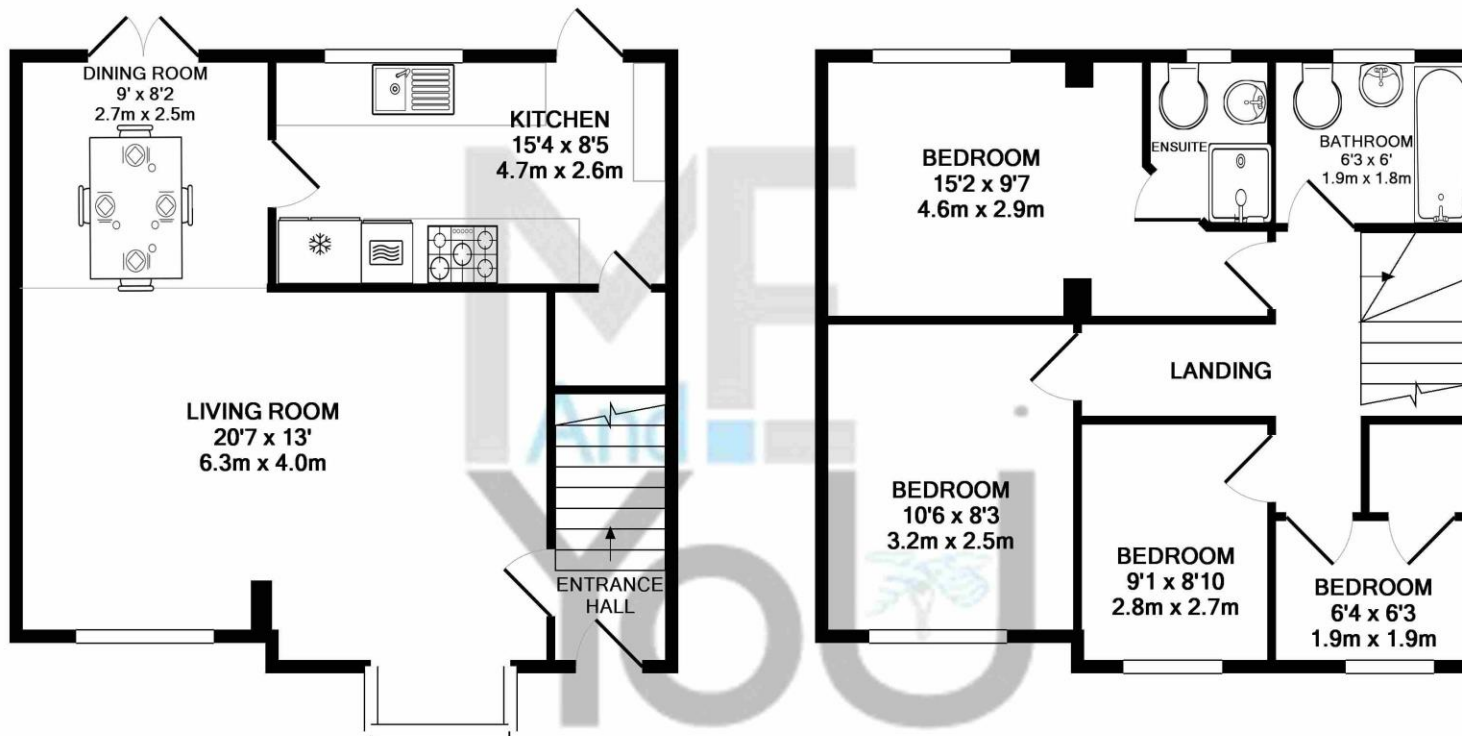












GROUND FLOOR

1ST FLOOR

ESTATE AGENTS  
RESIDENTIAL SALES

Whilst every attempt has been made to ensure the accuracy of the floor plan contained here, measurements of doors, windows, rooms and any other items are approximate and no responsibility is taken for any error, omission, or mis-statement. This plan is for illustrative purposes only and should be used as such by any prospective purchaser. The services, systems and appliances shown have not been tested and no guarantee as to their operability or efficiency can be given  
Made with Metropix ©2017