



16 Marsh Drive  
Cheltenham

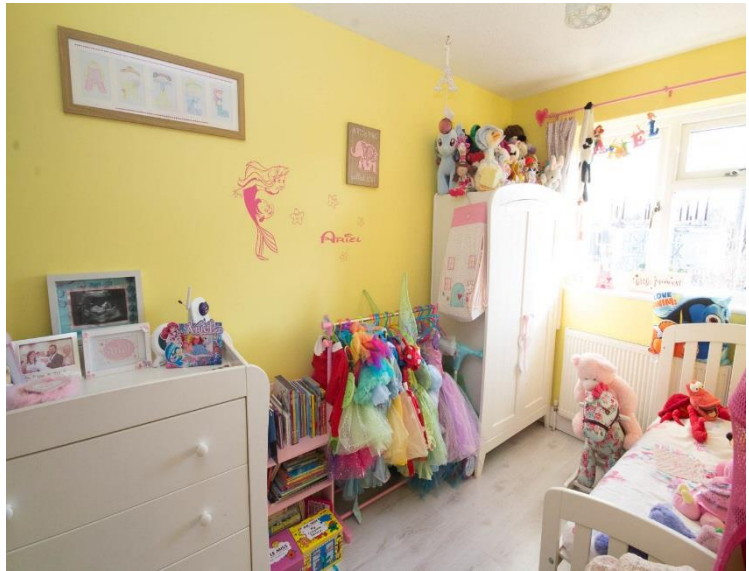


We are delighted to offer for sale this very well presented two bedroom house situated in a quite close near to the town centre.

The property comprises a large open living room laid with laminate wooden flooring which leads through to the kitchen at the rear. The kitchen floor is tiled where you will find ample space for all the utilities, a gas hob with oven beneath and access to the rear garden. The garden is large and well landscaped with lawn and decking and has side access to the front.





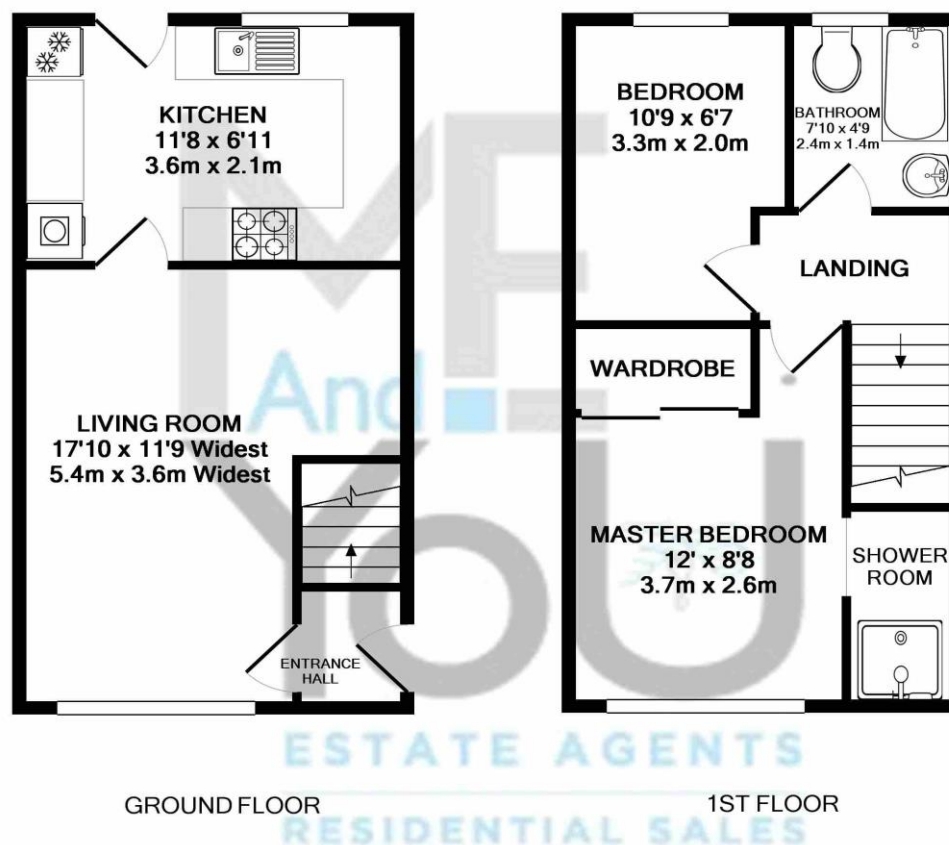


The first floor is occupied by a master bedroom with its own en-suite shower room and fitted wardrobes along with the second bedroom which is a good sized single. The family bathroom is tiled throughout and furnished with a bath, toilet and wash hand basin.

The property further benefits with modern double glazed windows and doors, gas central heating and an en-bloc garage unit just along from the property.

This property is set at the end of Marsh Drive in a quiet cul-de-sac and is conveniently located close to the town centre and all of its surrounding amenities.

Viewings are by appointment only through sole selling agents M.E And You Estate Agents – 01242 584007



Whilst every attempt has been made to ensure the accuracy of the floor plan contained here, measurements of doors, windows, rooms and any other items are approximate and no responsibility is taken for any error, omission, or mis-statement. This plan is for illustrative purposes only and should be used as such by any prospective purchaser. The services, systems and appliances shown have not been tested and no guarantee as to their operability or efficiency can be given  
Made with Metropix ©2018