



6 Hanford Drive
Eckington







ME And You are pleased to offer for sale this large five bedroom family home, beautifully presented and newly decorated throughout, set on the outskirts of the picturesque village of Eckington just beyond Bredon.

This spacious and modern family home is presented beautifully and has been newly decorated throughout. In addition, the en-suite and ground floor cloak rooms have been newly re-furbished and are of superior quality.

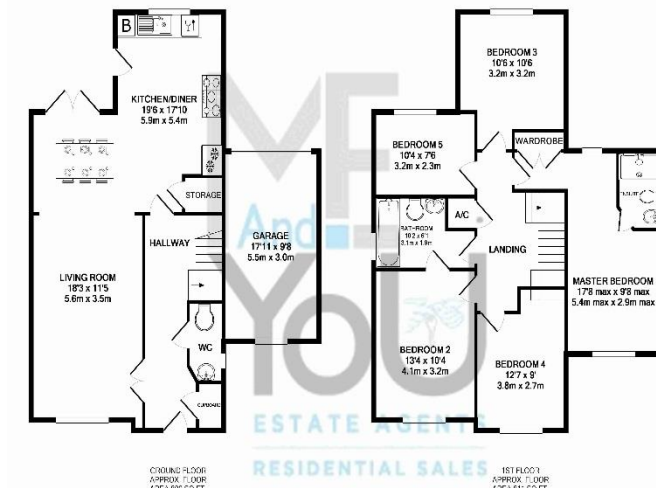
The ground floor consists of an enclosed entrance hall with rooms set off. Here you'll find a closet for coats and shoes and newly fitted WC. The spacious living room has been opened up and flows through to a dining area which looks onto the garden through French doors.

The kitchen is modern and spacious and is equipped with built in utilities such as a fridge freezer, washing machine, dish washer and five ring gas hob with double oven set beneath. Attractive and easy to maintain tiles adorn the floors that run through the kitchen and dining room.

Four good sized double bedrooms and one large single occupy the first floor, with the master bedroom benefiting from built in wardrobes and a newly refurbished en-suite with a large walk in shower. The family bathroom serves the remaining bedrooms and consists of a full size bath with shower over.

The property benefits from a single garage and driveway suitable for two vehicles to the rear with access to the garden, gas central heating and modern double glazed windows and doors.

Eckington is situated within the English countryside with the River Avon running around it, just beyond Bredon with easy access to Worcester, Tewkesbury, Cheltenham and Pershore. You will also find two pubs along with other local amenities and a popular primary school, all to be enjoyed within a lovely close community set in peaceful surroundings.



GROUND FLOOR
APPROX. GROSS
AREA 816 SQ.FT.
(14,392 SQ.FT.)

FIRST FLOOR
APPROX. GROSS
AREA 811 SQ.FT.
(15,430 SQ.FT.)

TOTAL APPROX. = GROSS AREA 1617 SQ.FT. (148,732 SQ.M.)

While every attempt has been made to ensure the accuracy of the floor plan, the measurements of the floor, windows, doors and any other fixtures are approximate and not necessarily to scale. The plan is for information only and is not intended to be used as a legal document. It is the responsibility of the purchaser to verify the accuracy of the plan and to ensure that the property is suitable for their intended use. The plan is not to be used as a legal document. It is the responsibility of the purchaser to verify the accuracy of the plan and to ensure that the property is suitable for their intended use. The plan is not to be used as a legal document. It is the responsibility of the purchaser to verify the accuracy of the plan and to ensure that the property is suitable for their intended use.