



Oakwood Close, Bournemouth

Oakwood Close, Bournemouth

FREEHOLD PRICE £295,000

A rarely available two double bedroom detached bungalow located in a cul de sac within a popular residential location on the outskirts of Bournemouth Town Centre and within easy reach of main transport links. The property benefits from new carpets, combination boiler installed in 2012 and complete redecoration throughout whilst also featuring a detached garage, ample off road parking and a private rear garden.

On entering the property an entrance porch leads into a hallway providing access to all accommodation. A generously sized living room provides a pleasant outlook to the front and rear aspect and leads into a separate dining area which provides access onto the rear garden. A separate kitchen offers ample floor and wall mounted units finished with a matching work surface along with a further access to the rear garden.

Both bedrooms are double in size with the accommodation being complete with a bathroom comprising a WC, wash hand basin and bath with shower over.

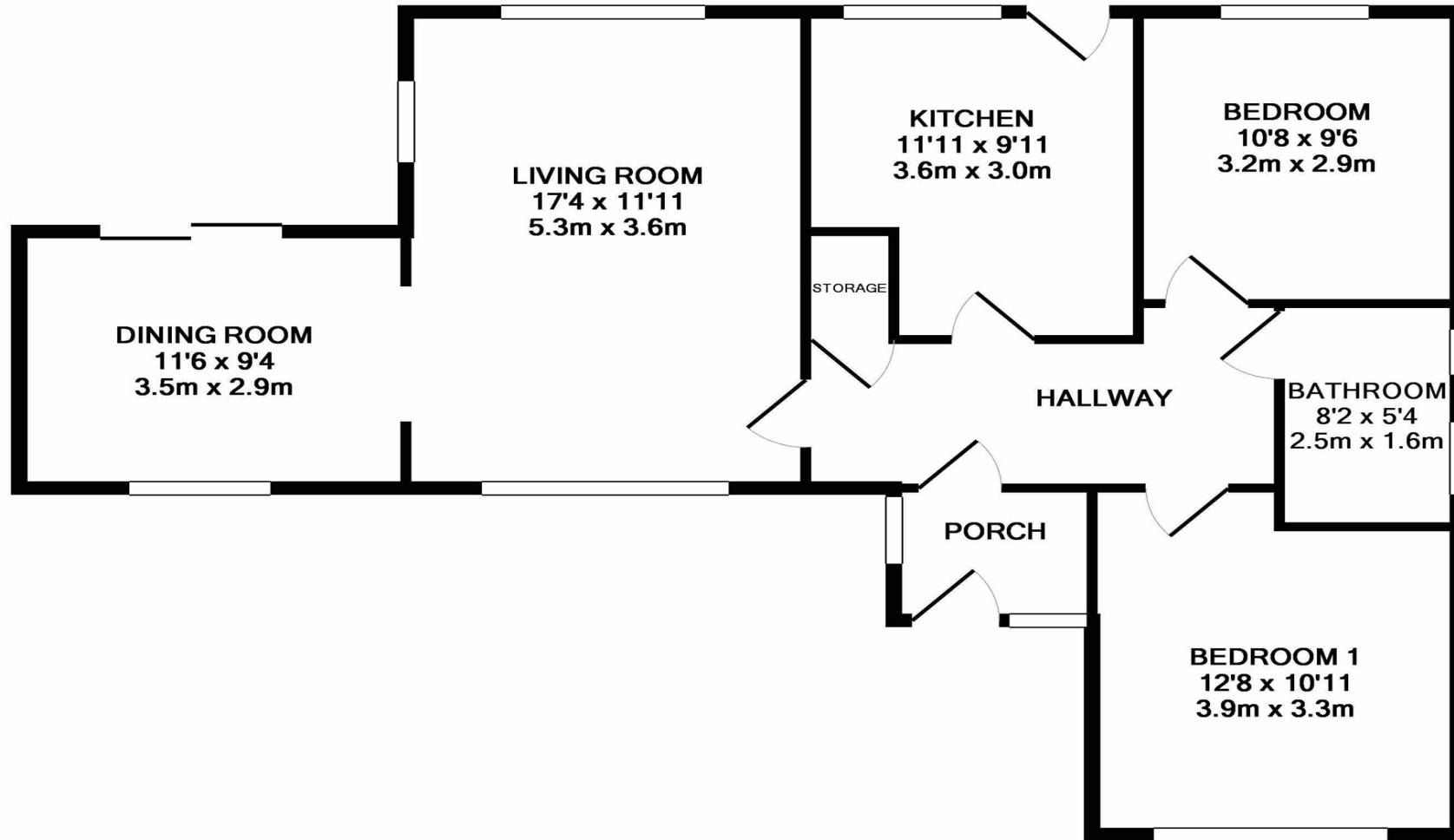
Externally the property is situated on a private corner plot with a low maintenance rear garden being complimented with a selection of flower and shrub borders. A driveway provides ample off road parking and leads to a detached garage.



COUNCIL TAX BAND: D

EPC RATING: D

AGENTS NOTE: The heating system, mains and appliances have not been tested by Hearnese Estate Agents. Any areas, measurements or distances are approximate. The text, photographs and plans are for guidance only and are not necessarily comprehensive. We endeavour to make our sales particulars as accurate as possible. However, their accuracy is not guaranteed and we have not had sight of the title documents. The buyer is advised to obtain verification from their solicitor in respect of the tenure of the property.



TOTAL APPROX. FLOOR AREA 818 SQ.FT. (76.0 SQ.M.)

Whilst every attempt has been made to ensure the accuracy of the floor plan contained here, measurements of doors, windows, rooms and any other items are approximate and no responsibility is taken for any error, omission, or mis-statement. This plan is for illustrative purposes only and should be used as such by any prospective purchaser. The services, systems and appliances shown have not been tested and no guarantee as to their operability or efficiency can be given

Made with Metropix ©2018

