



HEARNES

WHERE SERVICE COUNTS



# Ringwood, Hampshire, BH24 1US

## FREEHOLD

A wonderful peaceful cul-de-sac position, plenty of parking and a private garden, are just a few features of this outstanding detached chalet house.

The owner have owned this fine home since new, carefully improving it as they have gone along with additions such as an efficient 'air source' central heating boiler, solar hot water tubes and a simply stunning German fitted kitchen and utility room. This fantastic space has been cleverly designed to make the very best use of the space on offer and is fitted in a range of stylish matching units with contrasting Silestone worktops and upstand with colour matched glass splashbacks. High quality appliances have been installed including a Miele combination steam oven, matching Pyrolytic oven and plate warming drawer, a Miele 5-burner gas hob, Elica extractor unit and Miele dishwasher. The utility room is fitted out equally well and has a fantastic Liebherr American style integrated fridge freezer.

As you enter the property you are met by an imposing reception/dining hall and stairs to the first floor. In addition to this is a large ground floor primary bedroom suite with private en-suite shower room and a lovely spacious sitting room.

The first floor lies host to three double bedrooms, some with built-in wardrobes, serviced by a modern family bathroom.

Outside to the rear is a well maintained, enclosed rear garden with useful timber storage shed and paved patio with remotely operated awning.

The driveway provides parking for a couple of vehicles and leads to an integral garage with up and over door power and light and internal door to the house.

**COUNCIL TAX BAND: E**

**ENERGY PERFORMANCE RATING: C**

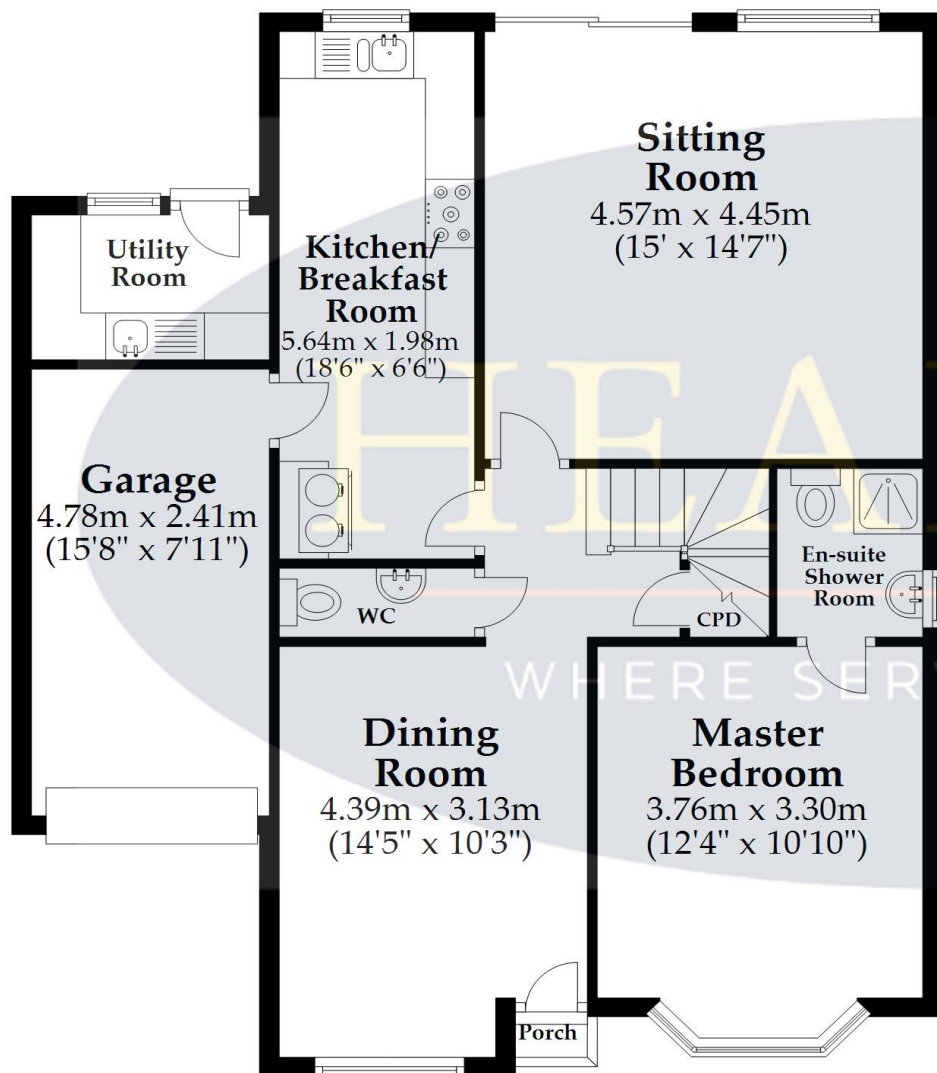
AGENTS NOTE: The heating system, mains and appliances have not been tested by Hearnese Estate Agents. Any areas, measurements or distances are approximate. The text, photographs and plans are for guidance only and are not necessarily comprehensive.



Note; Measurements  
were not taken by LJT  
Surveying and we  
cannot guarantee their  
accuracy

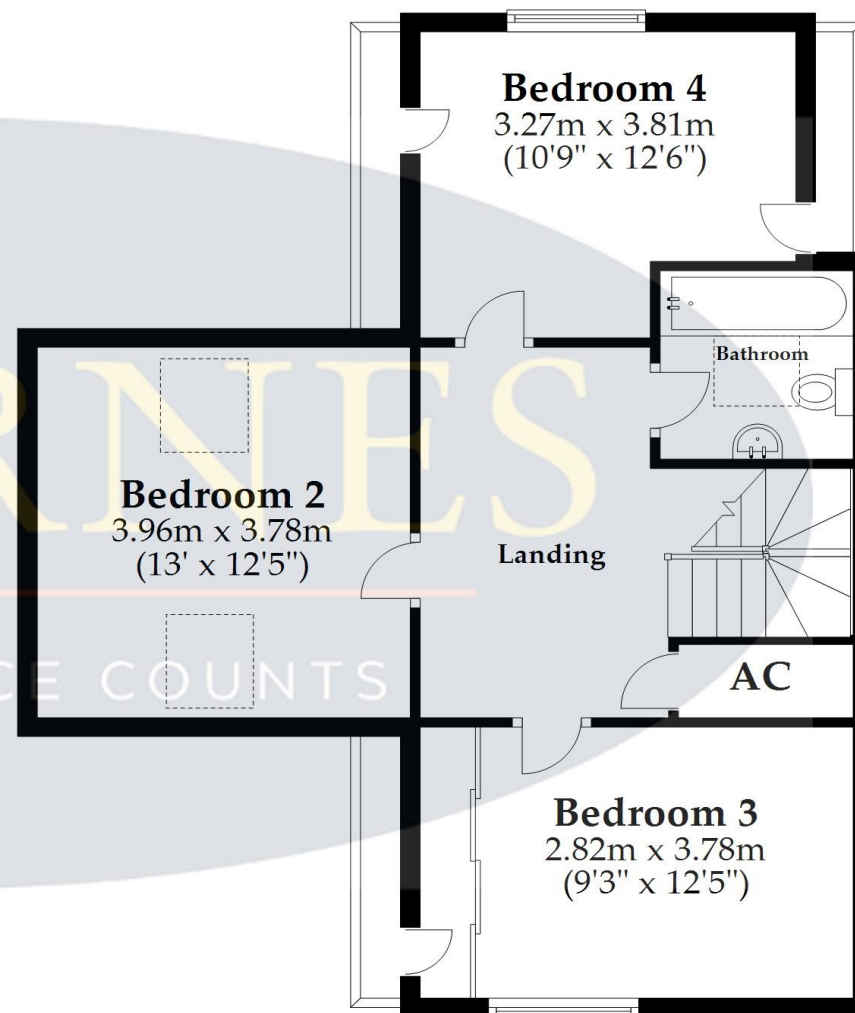
## Ground Floor

Approx. 85.8 sq. metres (923.4 sq. feet)



## First Floor

Approx. 59.1 sq. metres (635.7 sq. feet)



Total area: approx. 144.8 sq. metres (1559.0 sq. feet)

This plan is not to scale and it is for general guidance only. LJT Surveying Ringwood



52-54 High Street, Ringwood, Hampshire, BH24 1AG Tel: 01425 489955 Email: [ringwood@hearnes.com](mailto:ringwood@hearnes.com) [www.hearnes.com](http://www.hearnes.com)

OFFICES ALSO AT: BOURNEMOUTH, FERNDOWN, POOLE & WIMBORNE



