



**HEARNES**

WHERE SERVICE COUNTS

**Hennings Park Road, Oakdale  
Poole, Dorset, BH15 3QU**



# Hennings Park Road, Oakdale, Poole, Dorset, BH15 3QU

## Freehold Price £415,000

Set in a sought after road in Oakdale, this spacious and extended 3 double bedroom 1930's detached home offers excellent value for money. The property has been loved by the current owners, who had plans to extend and modernise, so it is ideal for any new buyer to continue this work. The property has a lovely sitting room with bay window, and extended dining room/day room, kitchen with integrated appliances, downstairs WC, utility room, and garden room. This home is well presented, bright and has a delightful 80' x 40" rear garden. It also benefits from a driveway with plenty of off-road parking, gas central heating and double glazing.

- Extended 3 double bedroom detached 1930's home
- Desirable location in Oakdale in a quiet road
- Lovely lounge with bay window and further double reception room
- Kitchen fitted in a range of cream units with integrated De Dietrich 5 ring gas hob, double oven, extractor, dishwasher, and fridge/freezer
- Separate utility room with wall mounted combination boiler, and space for washing machine, tumble dryer
- All 3 bedrooms with either fitted wardrobes or cupboards
- Ground floor cloakroom and first floor shower room
- 80' x 40" (approx.) flat rear garden with well-established borders and plants
- Detached garage with further outbuilding and greenhouse
- Driveway with off road parking for several cars
- Gas central heating and double glazing
- Well presented with further potential to extend or personalise

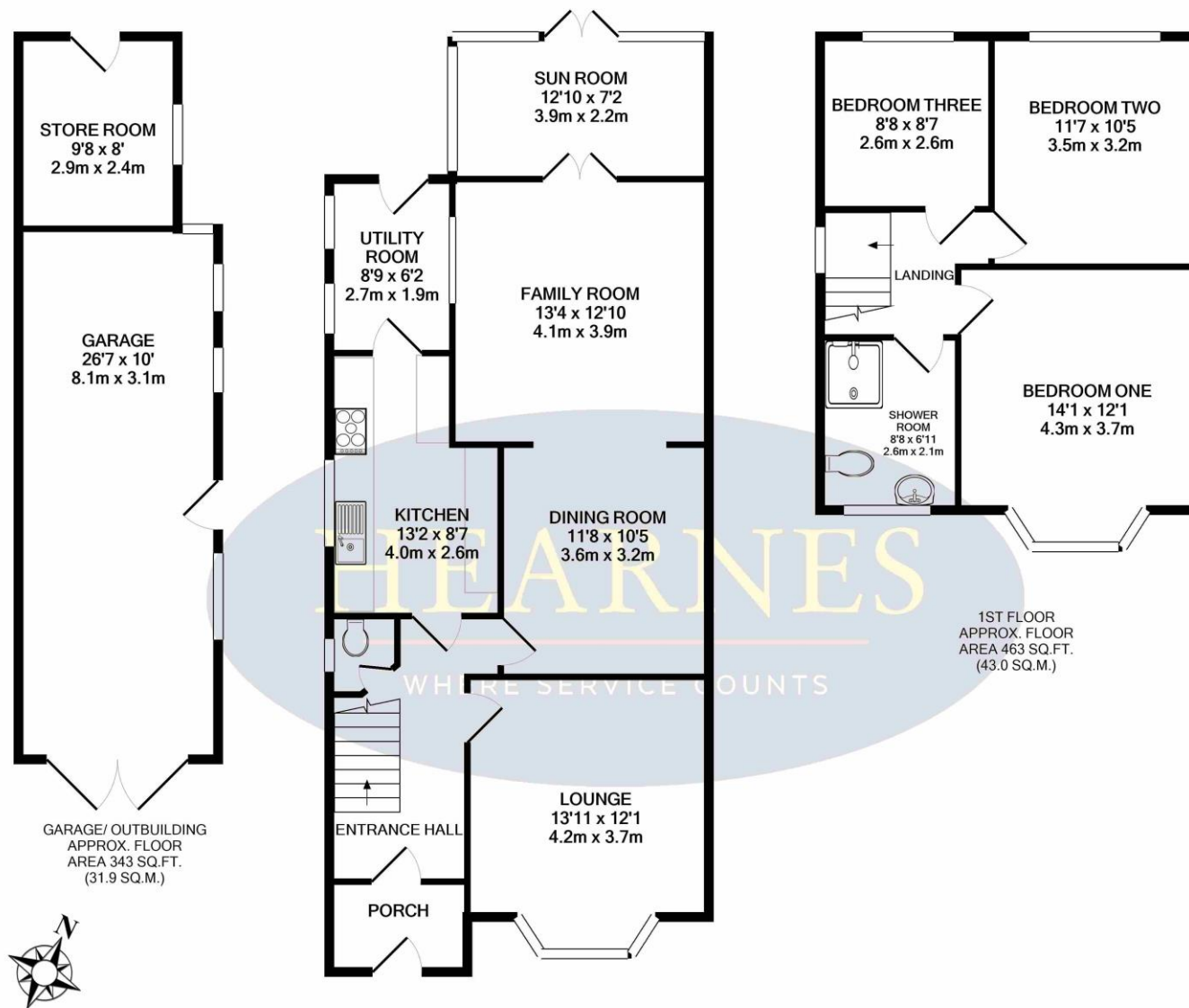
Set in a sought-after location within 350m of local shops and only 1.5 miles from Poole Town Centre. The road has recently been closed at the Dorchester Road end, making it a quiet and very desirable location.

COUNCIL TAX BAND: D

EPC RATING: D

AGENTS NOTE: The heating system, mains and appliances have not been tested by Hearn's Estate Agents. Any areas, measurements or distances are approximate. The text, photographs and plans are for guidance only and are not necessarily comprehensive.





18-20 Parkstone Road, Poole, Dorset, BH15 2PG Tel: 01202 377377 Email: poole@hearnes.com www.hearnes.com

OFFICES ALSO AT: BOURNEMOUTH, FERNDOWN, RINGWOOD & WIMBORNE



