



Harbour View Road, Lower Parkstone
Poole, Dorset, BH14 0PD

HEARNES

WHERE SERVICE COUNTS



View from master bedroom



Harbour View Road

Lower Parkstone, Poole, Dorset, BH14 0PD

Freehold Price: £1,100,000

Probably the finest location North of Ashley Cross in this proximity. This is a rare opportunity to acquire a distinctive 1930's Art Deco detached home approaching 3000 square feet with panoramic views to Poole Harbour over the treetops of Lower Parkstone. The outstanding master suite occupies the entire top floor enjoying truly panoramic views and being of a size to afford a sitting area with expansive double glazing and has a large south westerly balcony, an en suite 5 piece bathroom, and a walk-in wardrobe. There is a second en suite and a family bathroom in addition on the first floor servicing the four other double bedrooms. The ground floor includes an open plan fully fitted kitchen/dining room and a spectacular lounge with conservatory area as well as an impressive entrance hall, cloakroom and utility room/garage. The gardens are secluded and south westerly facing and include a home office, timber shed, extensive split-level deck and a garden kitchen adjacent to a vine covered al fresco dining area.

- Rarely available detached 1930's Art Deco property
- Spectacular views over treetops to Poole Harbour
- Remarkable master suite occupying the entire top floor with balcony, panoramic views, luxury en suite and walk-in wardrobe
- Five double bedrooms, Three bathrooms (Two en-suite)
- Delightful south westerly rear garden with vine covered garden kitchen area and generous deck ideal for al fresco dining
- Carriage driveway
- Integral garage which is currently fitted as a utility room
- Double glazing and gas central heating
- Spectacular lounge with conservatory/sitting area
- Fully fitted kitchen/dining room with range of appliances and island unit providing breakfast bar
- Probably the finest location north of Ashley Cross in BH14
- 2918 square feet of accommodation
- Stylish fittings and décor throughout

Location, location, location. This really is a tremendous setting just half a mile from Ashley Cross with its excellent range of cafes, bars and restaurants as well as an eclectic mix of independent shops. Poole Town Centre is just over a mile away; Parkstone Golf Club is approximately 1.5 miles and Salterns Marina is just 2 miles away. The sandy bathing beaches that the area is famous for are within 3 miles and Bournemouth Town Centre is 4 miles away.

Council tax band: F

EPC rating: D

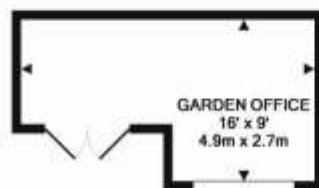




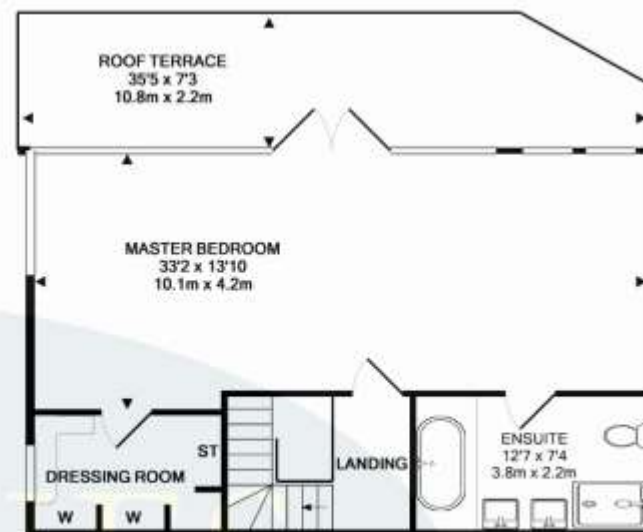


TOTAL APPROX. FLOOR AREA 3038 SQ.FT. (282.2 SQ.M.)

Whilst every attempt have been made to ensure the accuracy of the floor plan contained here, measurements of doors, windows, rooms and any other items are approximate and no responsibility is taken for any error, omission, or mis-statement. This plan is for illustrative purposes only and should be used as such by any prospective buyer. Produced by Swift Energies 07512 365 141
Made with Metropix ©2019



NOT LOCATED IN EXACT POSITION
APPROX. FLOOR AREA 120 SQ.FT. (11.1 SQ.M.)







www.hearnes.com

18 - 20 Parkstone Road, Poole, Dorset, BH15 2PG

Tel: 01202 377377 Email: poole@hearnes.com

Offices also at: BOURNEMOUTH, FERNDOWN, RINGWOOD & WIMBORNE