



HEARNES

WHERE SERVICE COUNTS

Hightown, Ringwood, Hampshire, BH24 3EG

FREEHOLD

An extended two bedroom mid terrace bungalow situated on the outskirts of Ringwood Town centre and within walking distance of Hightown Lakes, country pub/restaurant and a local bus stop. Ringwood sits on the borders of the New Forest National Park and offers an extensive range of educational, retail and leisure facilities. Commuters are well catered for with A31 and A33 providing links to the M3 and M27. The popular beaches at Bournemouth, Christchurch and Poole are all within a short drive.

The well-presented accommodation comprises of an entrance porch with storage cupboards with a doorway opening dual aspect sitting/dining/kitchen. The kitchen area is partially separated from the sitting/dining room via a breakfast bar and offers a range of modern floor and wall mounted units, complimenting worktops, stainless steel sink unit, space and plumbing for appliances, laminate wood effect flooring, a window overlooking the side and an external door opening onto the rear gardens.

Accessed from the sitting/dining room an inner hallway with an airing cupboard provides access to the two bedrooms with bedroom one being a good size double with fitted wardrobes. Both bedrooms are serviced by the shower room which has UPVC splash backs.

The front of the property is approached via by a tarmac pathway with pretty flower borders to either side. The rear gardens are well enclosed by wooden fencing with a patio area adjoining the property, a garden shed and pathway leading to the rear gate which provides access to the parking area and garage which is in a nearby block.

Viewing is highly recommended to appreciate the location and presentation of this charming bungalow.

COUNCIL TAX BAND: B

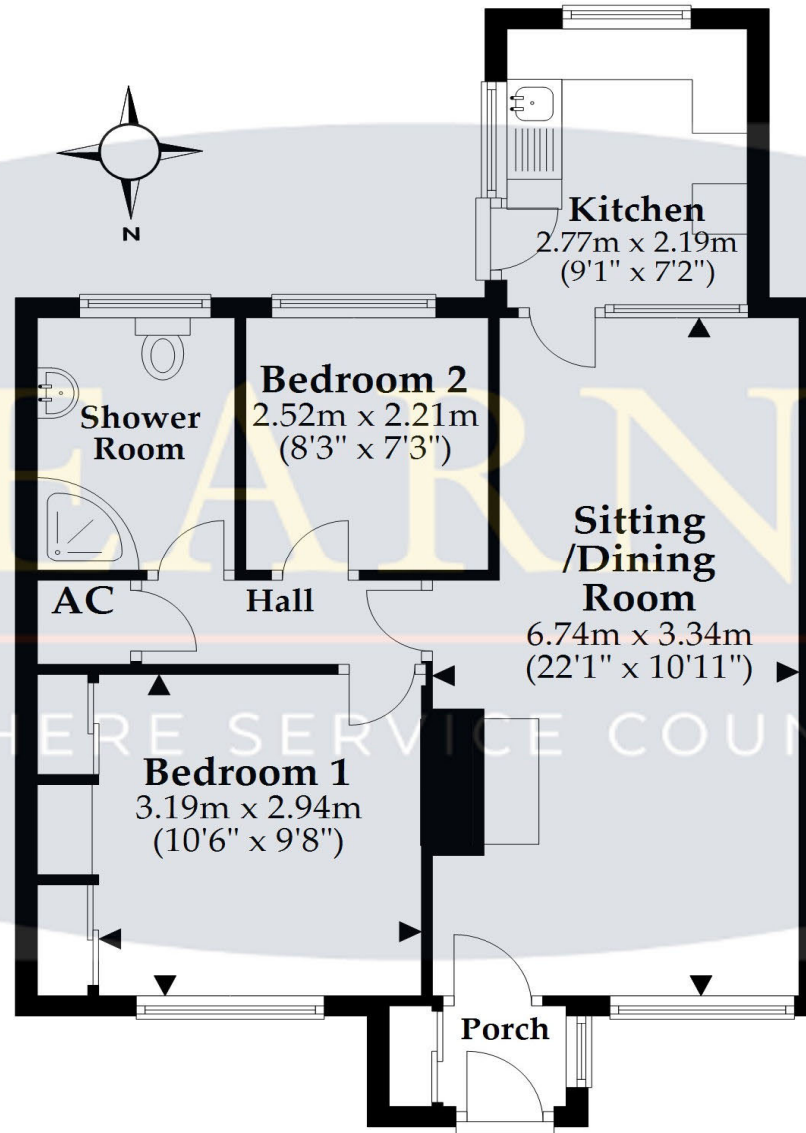
ENERGY PERFORMANCE RATING: F

AGENTS NOTE: The heating system, mains and appliances have not been tested by Hearnese Estate Agents. Any areas, measurements or distances are approximate. The text, photographs and plans are for guidance only and are not necessarily comprehensive and do not form part of the contract.



Ground Floor

Approx. 54.8 sq. metres (589.7 sq. feet)



Total area: approx. 54.8 sq. metres (589.7 sq. feet)

This plan is not to scale and it is for general guidance only. LJT Surveying Ringwood



52-54 High Street, Ringwood, Hampshire, BH24 1AG Tel: 01425 489955 Email: ringwood@hearnes.com www.hearnes.com

OFFICES ALSO AT: BOURNEMOUTH, FERNDOWN, POOLE & WIMBORNE

