



**HEARNES**  
WHERE SERVICE COUNTS

**Bailey Crescent, Oakdale  
Poole, Dorset, BH15 3HB**

# Bailey Crescent, Oakdale, Poole, Dorset, BH15 3HB

## Freehold Price £265,000

A deceptively spacious 3 double bedroom, semi-detached house with enormous potential and includes a garage, conservatory and mature 70ft garden. The current owners have resided here since new and love the very convenient location, within 1 ½ miles of two well respected schools, bus routes to Bournemouth and Poole and local shops.

- 3 double bedroom semi-detached home with great potential for personalisation
- Generous lounge/dining room with access to conservatory
- Separate porch with storage cupboard ideal for coats and shoes
- Kitchen with a range of units and complimentary work tops, including freestanding cooker, fridge and dishwasher
- Timber construction conservatory which spans the rear of the property
- Garage with electric roller door with power & light
- Solar panels that help reduce electricity bill
- Also included are carpets, curtains and water softener
- Lovely mature 70ft x 25ft garden with fruit trees, greenhouse and a large shed included
- Double width driveway, providing off road parking for 2/3 cars
- Gas central heating & double glazing (except for conservatory)

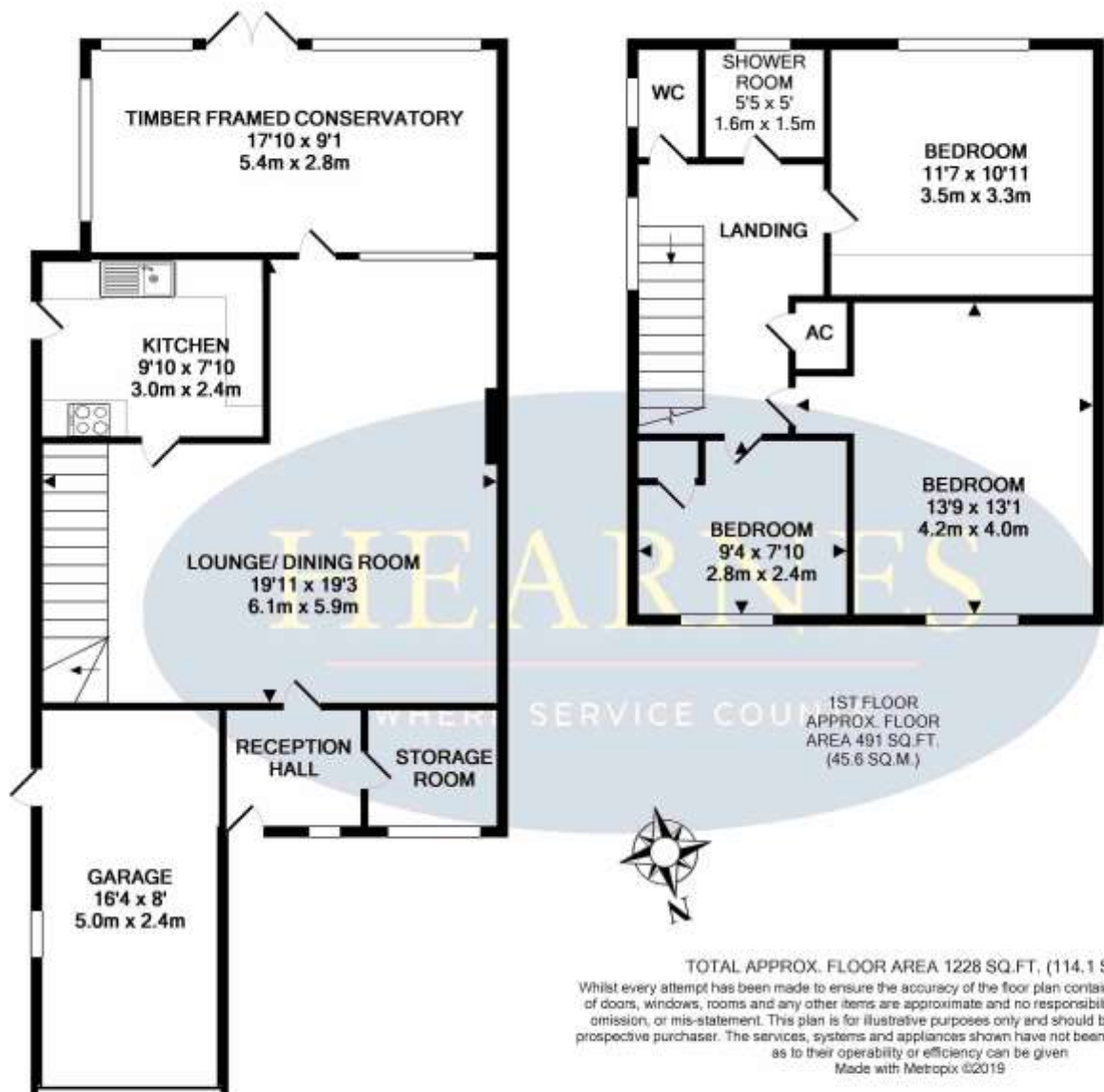
This family home is set in a quiet residential road in Oakdale within 1½ miles of St Edwards school and St Mary's Catholic school. Poole Park is 2 miles away with a popular boating lake, cafes and restaurants situated around the waterside and offering an enjoyable family day out with many leisure amenities. The town centre is just a little further along from Poole Park and offers a wide range of shops, restaurants, and bars and the famous Poole Quay.

COUNCIL TAX BAND: C

EPC RATING: D



AGENTS NOTE: The heating system, mains and appliances have not been tested by Hearnese Estate Agents. Any areas, measurements or distances are approximate. The text, photographs and plans are for guidance only and are not necessarily comprehensive.



18-20 Parkstone Road, Poole, Dorset, BH15 2PG Tel: 01202 377377 Email: poole@hearnes.com www.hearnes.com

OFFICES ALSO AT: BOURNEMOUTH, FERNDOWN, RINGWOOD & WIMBORNE

